

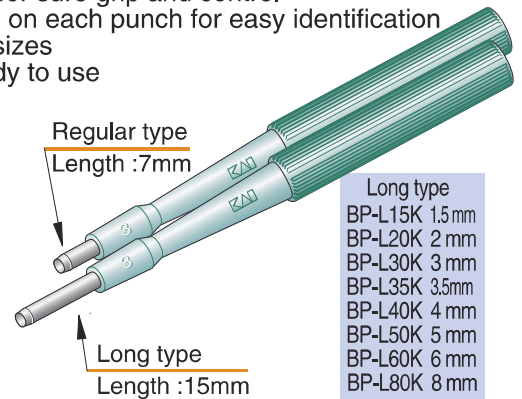


Features

- Seamless stainless steel sharp cutting edge
- Ribbed handle for sure grip and control
- Size embossed on each punch for easy identification
- Wide range of sizes
- Sterile and ready to use
- Disposable

Clinical areas

- Dermatology
- Gynecology
- Podiatry



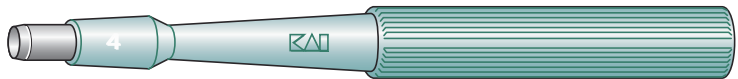
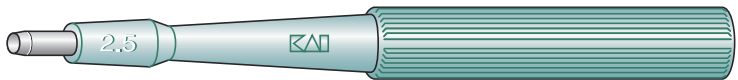
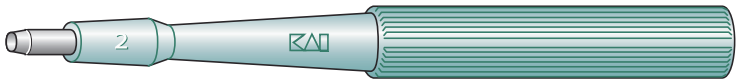
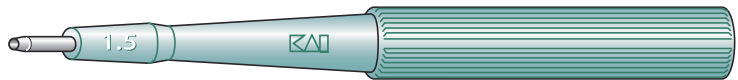
Long type	
BP-L15K	1.5 mm
BP-L20K	2 mm
BP-L30K	3 mm
BP-L35K	3.5 mm
BP-L40K	4 mm
BP-L50K	5 mm
BP-L60K	6 mm
BP-L80K	8 mm

Package

- 20 punches in a dispenser box
- 50 boxes per shipping carton

Regular type

REF	SIZE
BP-10F	1mm
BP-15F	1.5mm
BP-20F	2mm
BP-25F	2.5mm
BP-30F	3mm
BP-35F	3.5mm
BP-40F	4mm
BP-50F	5mm
BP-60F	6mm
BP-80F	8mm





Features

- Stainless steel semi sharp cutting edge for soft or weak tissue
- Size embossed on each curette for easy identification
- Wide range of sizes
- Sterile and ready to use
- Disposable

Used in the following minor skin surgical procedures






- Curettage of a basal cell carcinoma
- Curettage of a verruca
- Curettage of other benign neoplasms of the skin

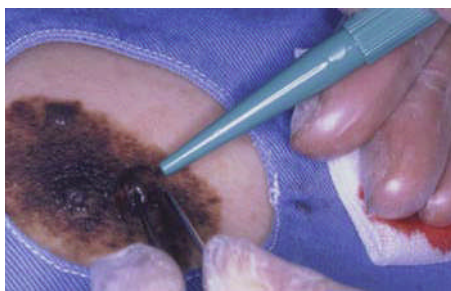
Clinical areas

- Dermatology
- Surgery
- Podiatry
- Veterinary

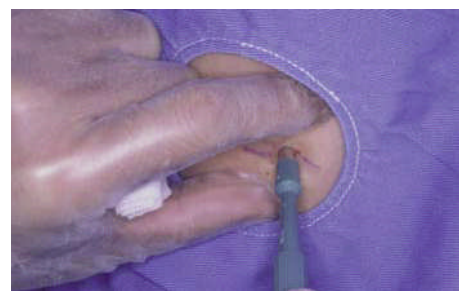
Package

- 20 curettes in a dispenser box
- 20 boxes per shipping carton

REF	SIZE	Actual size
MK402	2 mm	
MK403	3 mm	
MK404	4 mm	
MK405	5 mm	
MK407	7 mm	



A dermal curette biopsy technique for various dermatological diseases



A punch (Trepan) biopsy technique for various dermatological diseases

References : Manabu MAEDA, MD & Ph D *Department of Dermatology, Prefectural Gifu Hospital, 4-6-1 Noishiki, Gifu City, 500-8717, Japan*

Product specifications may be changed without notice.



Certified Management System
ISO 9001
ISO 14001
ISO 13485



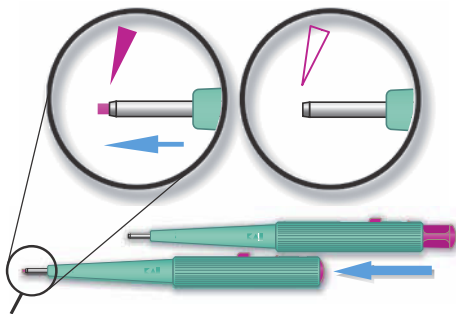
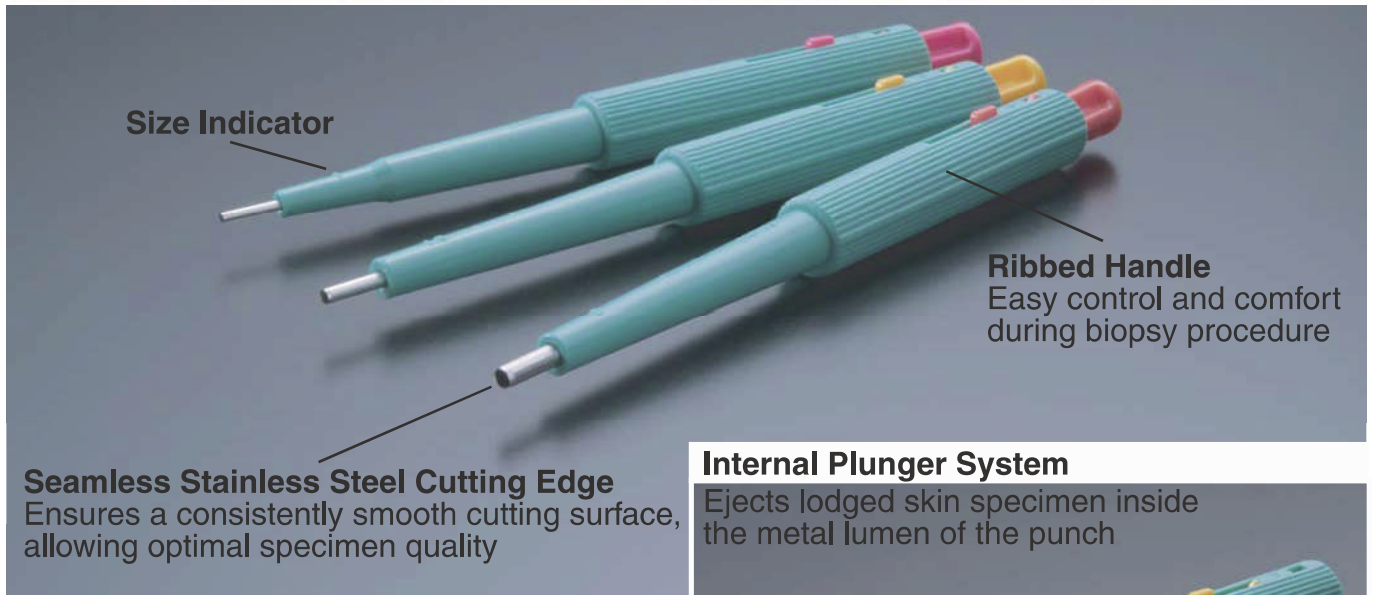
kai industries co., ltd.
1110, Oyana, Seki City, Gifu Pref. 501-3992 Japan
Phone: +81 (0) 575 28 6600 Fax: +81 (0) 575 28 6611
Email: info-ind@kai-group.com <http://www.kai-ind.co.jp>

kai Europe GmbH
Kottendorfer Str. 5, 42697 Solingen, Germany
Phone: +49 (0) 212 232380 Fax: +49 (0) 212 2323899

DISPOSABLE BIOPSY PUNCH WITH PLUNGER SYSTEM



STERILE • STAINLESS STEEL • SINGLE USE • COLOR CODED • PATENT PENDING



	BPP-10F 1.0mm w/plunger	
	BPP-15F 1.5mm w/plunger	
	BPP-20F 2.0mm w/plunger	
NEW	BPP-30F 3.0mm w/plunger	
NEW	BPP-40F 4.0mm w/plunger	

Punches are available in three sizes, marked clearly on the handle, blister pack and box
Punches are individually packed in color-coded, transparent, sturdy blister packs, 20 per dispenser box

Product specifications may be changed without notice



kai industries co.,ltd.
1110, Oyana, Seki City, Gifu Pref. 501-3992 Japan
Phone : +81 (0) 575 28 6600 Fax : +81 (0) 575 28 6611
Email: info-ind@kai-group.com http://www.kai-ind.co.jp

kai Europe GmbH
Kottendorfer Str. 5, 42697 Solingen, Germany
Phone : +49 (0) 212 232380 Fax : +49 (0) 212 2323899