

Guide to Protective Materials

To eliminate confusion, here's a brief description of the main materials we use in the construction of Jackson Allison protective apparel. Refer back to this page as you look through this document.

Spunbond Polypropylene

The standard fabric for basic protective apparel; created by bonding fibres together to form a single layer of breathable, woven-like material. Its main advantages are economy and comfort but it also provides light fluid protection.

Coated Polypropylene

Created when soft, spunbond polypropylene is coated with a layer of impervious polyethylene. This lightweight material is ideal for any situation demanding a high level of fluid protection.

Colour-coding has been developed to differentiate between the levels of protection described below.



Level 1 Lightweight

Breathable polypropylene designed for basic protective apparel. Light protection, splash proof.



Level 2 Medium to Heavyweight

Coated polypropylene, designed for facility wide usage. Moderate to heavy fluid protection.



Level 3 Protection Plus

Either coated polypropylene or chlorinated polyethylene designed for high-risk exposure. Heavy fluid, toxin and pathogen protection.

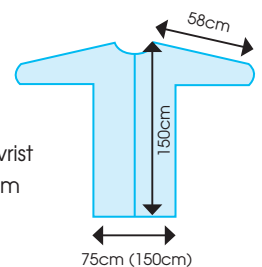
Measurements

All measurements in this document are consistent.

Sleeve length - shoulder to wrist

Body length - shoulder to hem

Width - closed and open





Level
2

Gowns

ISOLATION

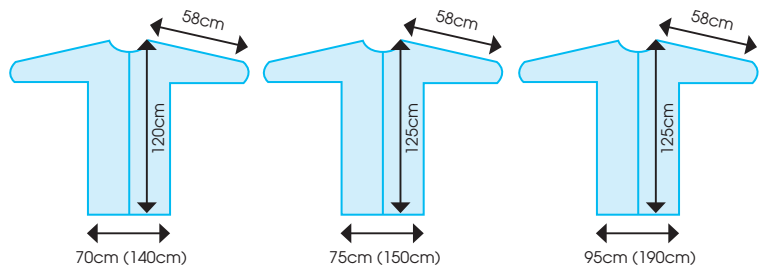
Isolation gown, moderate to heavy fluid
Polypropylene (PP) + polyethylene (PE)
Velcro neck, ties at each side, knitted cuffs

- Laminated front + sleeves

Product specifications

| Code | Size | Weight | Colour | Dimensions | Sleeve | UOM |
|-----------|-----------|--------|--------|------------|--------|--------|
| 2H38XLY | X-Large | Medium | Yellow | 125x150cm | 58cm | Box/50 |
| 2H38XLB | X-Large | Medium | Blue | 125x150cm | 58cm | Box/50 |
| 2H38LB | Large | Medium | Blue | 120x140cm | 58cm | Box/50 |
| 2H38LY | Large | Medium | Yellow | 120x140cm | 58cm | Box/50 |
| 2H38XXXLB | XXX-Large | Medium | Blue | 125x190cm | 58cm | Box/50 |
| 2H38XXXLY | XXX-Large | Medium | Yellow | 125x190cm | 58cm | Box/50 |
| 2H38XLBWN | X-Large* | Medium | Blue | 125x150cm | 58cm | Box/50 |
| 2H38XLYWN | X-Large* | Medium | Yellow | 125x150cm | 58cm | Box/50 |

*Wide Neck





Level
2

Gowns

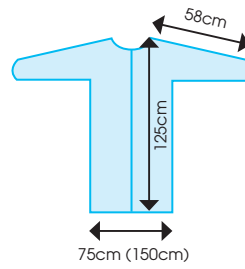
ISOLATION

Isolation gown, moderate to heavy fluid
Polypropylene (PP) + polyethylene (PE)
Velcro neck, ties at each side, knitted cuffs

- Laminated front + back + sleeves

Product specifications

| Code | Size | Weight | Colour | Dimensions | Sleeve | UOM |
|---------|---------|--------|--------|------------|--------|--------|
| 2F38XLY | X-Large | Medium | Yellow | 125x150cm | 58cm | Box/50 |
| 2F38XLB | X-Large | Medium | Blue | 125x150cm | 58cm | Box/50 |





Level
1

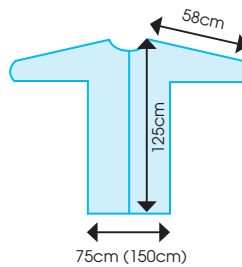
Gowns

COVER

Cover gown, splash proof
Lightweight polypropylene (PP)
Ties at neck & front

Product specifications

| Code | Size | Colour | Cuff | Dimensions | Sleeve | UOM |
|---------|---------|--------|---------|------------|--------|--------|
| 130XLBE | X-Large | Blue | Elastic | 125x150cm | 58cm | Box/50 |
| 130XLYE | X-Large | Yellow | Elastic | 125x150cm | 58cm | Box/50 |



Level
1

Gowns

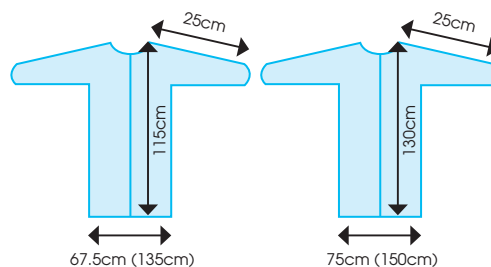
PATIENT

Patient gown, splash proof
Light weight polypropylene (PP)
Ties at neck & front

- Short sleeve

Product specifications

| Code | Size | Colour | Dimensions | Sleeve | UOM |
|-----------|----------|------------|------------|--------|--------|
| 1P38XLDB | X-Large | Dark Blue | 115x135cm | 25cm | Box/50 |
| 1P38XXLDG | XX-Large | Dark Green | 130x150cm | 25cm | Box/50 |





Level
3

Gowns

CLEANING / WASHROOM

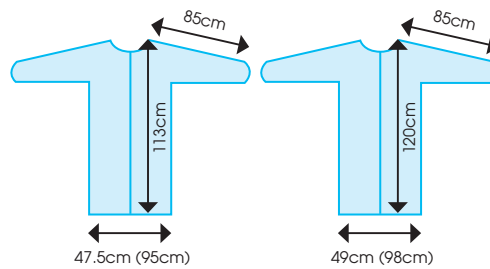
Chlorinated polyethylene (CPE)

Plastic gown, heavy fluid, toxin and pathogen protection

- Thumb hook, neck loop, ties at front

Product specifications

| Code | Size | Colour | Dimensions | Sleeve | UOM |
|---------|---------|--------|------------|--------|---------|
| 3T47LB | Large | Blue | 113x95cm | 85cm | Box/200 |
| 3T47XLB | X-Large | Blue | 120x98cm | 85cm | Box/100 |



Level
3

Aprons

PLASTIC APRON

Low-density polyethylene (LDPE)

Ties around waist

- On pad of 50 (3 holes)

Product specifications

| Code | Size | Weight | Colour | UOM |
|---------|----------|--------|--------|---------------------|
| A25P50W | 63x129cm | Light | White | Pad/50, Box/20 Pads |
| A25P50B | 63x129cm | Light | Blue | Pad/50, Box/20 Pads |
| A25P50R | 63x129cm | Light | Red | Pad/50, Box/20 Pads |

